

Emlite Twin Element Meter

Emlite EMC1.w



MID Approved electric meter with dual measuring elements

The Em-lite EMC1 has dual measuring elements for independent measurement of energy import, export and energy generation from solar photovoltaic.

The integrated GPRS module sends meter readings to the Openmetrics web portal where users analyse how much of the energy generated is being utilised.

Openmetrics including tools for analysing PV performance, tracking FIT earnings, energy imported, export and self-consumption for Power Purchase Agreements.

Meter Features

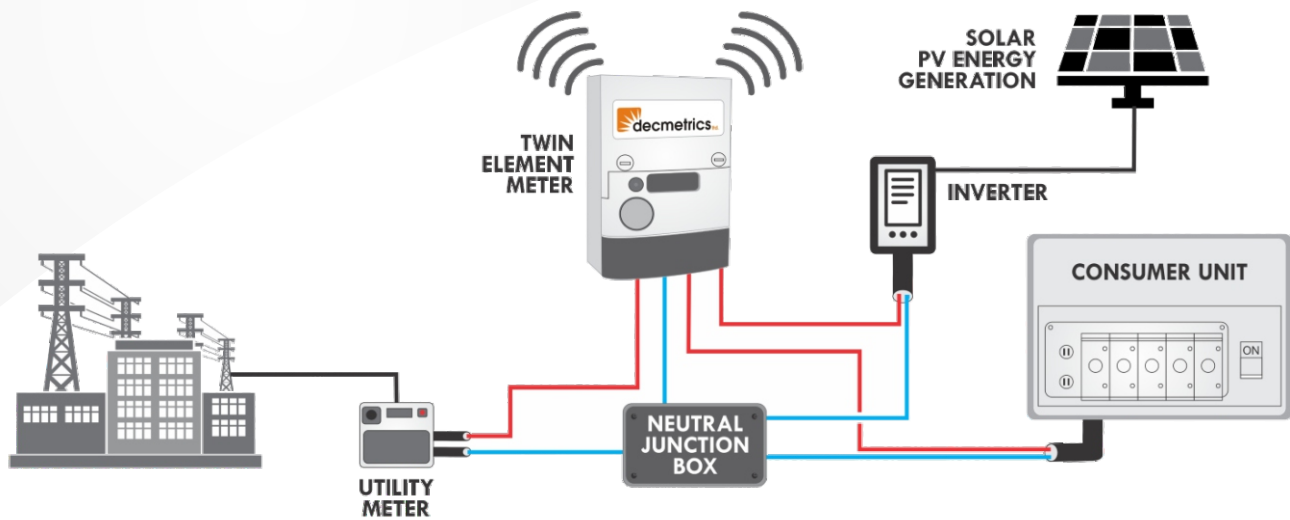
- ✓ **Twin measuring elements**
For independent measurement of net import and PV energy generation.
- ✓ **Available with WiFi communications module**
Active and reactive import and export energy profiled at half-hour intervals.
- ✓ **Large internal memory (120 days storage)**
- ✓ **Twin 100A disconnect breakers**
For independent breaker control on dual elements for prepayment and remote disconnect.
- ✓ **Integrated GPRS communications modem with network roaming SIM card**
- ✓ **Anti-tamper features - magnetic fraud detection, terminal cover removal detection, neutral disconnect fraud prevention.**
- ✓ **Backlit LCD display showing energy import, export, generation, and generation used**

Openmetrics Monitoring

- ✓ Dual element meter readings updated daily
- ✓ Half-hour profiling for detailed energy usage
- ✓ Visualise net import/export energy with PV generation
- ✓ Track feed-in-tariff earnings
- ✓ Track cost of energy purchased from the grid
- ✓ Solar energy performance analysis with PVGIS
- ✓ Automated fault detection
- ✓ High and low threshold alerts by email
- ✓ Automatic CSV export to FTP and email



Typical dual element meter arrangement for domestic PPA metering



Technical Data

Electrical	Voltage	Nominal voltage	220V - 240V, 276 max
	Frequency	Nominal frequency	50Hz, variation +/- 5%
	Current	Basic current (Iref) Maximum (Imax)	5, 10, 15 and 20A 100A
	Accuracy	Active/Reactive energy	Class B, to EN 50470 1-3 Class 2, to IEC 160254-23
	Physical	Terminal Arrangement Main Terminal Size Terminal Construction	BS 7856 8.2mm diameter Solid brass

Meets the essential requirements of the Measuring Instruments Directive (MID) 2004/22/EC.

Environmental	Temperature range	-25°C to +55°C
	Ingress protection	IP53, IEC 60529 : 1989

Meters are intended for installation in a class E2 electromagnetic environment and Class M1 Mechanical Environment according to 2004/22/EC Directive.

Communications Module	GPRS (2.5G)	ASLH382 with network roaming SIM MC11 a/b with network roaming SIM
Overall dimensions	Including module	233H x 172W x 49D

**CALL US TODAY FOR A QUOTATION OR
FOR MORE INFORMATION**

+44(0)1883 460411