

# Single Phase GPRS Smart Meter



The Emlite EMA1 meter is an MID approved single phase electronic meter with GPRS module for automatic meter reading

The meter uses the MC11 integrated GPRS communications module with network roaming SIM card. Meter readings are updated daily on the Openmetrics web portal.

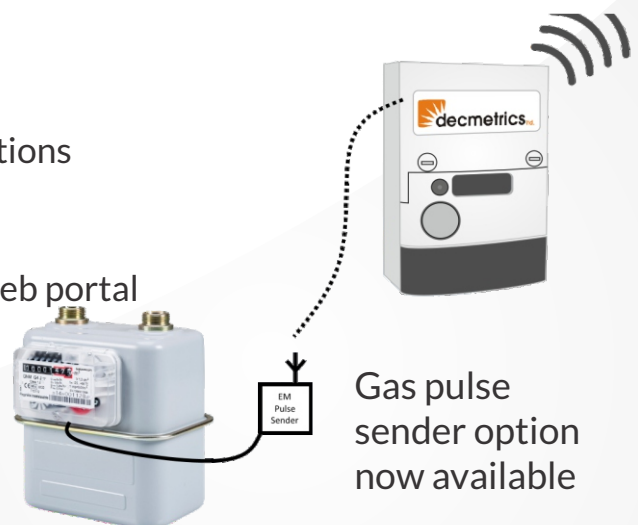
This makes it an ideal solution for remote monitoring of energy generation on solar PV systems. Or for sub-lettings where consumption needs to be monitoring for billing.

The EMA1 installs like an ordinary single phase electric meter. The back-lit LCD shows GSM signal quality for installers to check the meter is operating normally before leaving site.

The meter comes with an active network roaming SIM for multi-network resiliency (O2, EE, Vodafone and international networks).

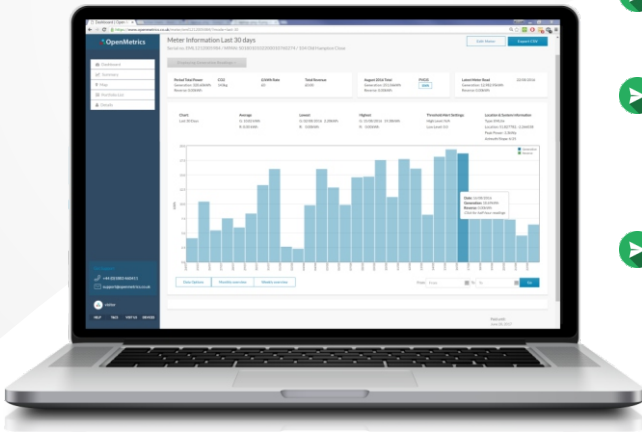
The ATEX approved Pulse Radio can be used for monitoring a nearby gas meter with a pulse output.

- ✓ Fully MID approved meter and GPRS module
- ✓ Network roaming SIM card for reliable communications
- ✓ Direct connect single phase up to 100A
- ✓ Automatic Meter Reading with the **Openmetrics** web portal
- ✓ Optional SMA connector for external antenna
- ✓ Back lit LCD for showing signal strength
- ✓ Import and export kWh registers



Gas pulse sender option now available

## Openmetrics Monitoring



- ▶ Subscription based monitoring service
- ▶ Get alerts when a system goes offline or energy thresholds are exceeded
- ▶ Analyse energy consumption or generation in detail with user-friendly tools

<b>GPRS Module</b>	MC11	2.5G GPRS Communications Radio pulse sender compatible
--------------------	------	---

<b>Electrical</b>	Voltage	Nominal voltage	220V - 240V
	Frequency	Nominal frequency Frequency variation	50Hz or 60Hz + - 5%
	Current	Maximum (Imax)	100A
	Accuracy	Active Energy Reactive energy	Class B, 20 EN 50470 1-3 Class 2, to IEC 62053-23

Meets the essential requirements of the Measuring Instruments Directive **(MID)** 2004/22/EC.  
MCS Approved for feed-in-tariff metering and vendor approved for AMR submissions

<b>Environmental</b>	Temperature range Ingress protection	-25'C to +55'C IP52 to BS EN 60529
----------------------	---	---------------------------------------

Meters are intended for installation in a class E2 electromagnetic environment and Class M1 Mechanical Environment according to 2004/22/EC Directive.

<b>Physical</b>	Terminal arrangement Main terminal size Terminal Construction	BS 7856 8.2mm diameter with 2 M6 pinch screw Solid brass double screw clamp
<b>Overall dimensions</b>	Including module	233H x 172W x 49D